



Impact of Social Sciences & Humanities

4-5 October 2018, Copenhagen

Tivoli Gardens

Welcome to day 2 of the conference on

The Impact Agenda for Social Sciences & Humanities

AESIS

NETWORK FOR
ADVANCING & EVALUATING THE SOCIETAL IMPACT OF SCIENCE

novo
nordisk
fonden





Impact of Social Sciences & Humanities

4-5 October 2018, Copenhagen

Lumbye Hall, 09.00-11.00

Plenary Opening

Welcome by: David Budtz Pedersen

Mikkel B. Rasmussen

Thomas Alslev Christensen

Jane Bjørn Vedel

A decorative background at the top of the slide featuring a network diagram with red and black nodes connected by thin lines, set against a light red gradient.

Impact of Social Sciences & Humanities

4-5 October 2018, Copenhagen

Plenary opening

Mikkel B. Rasmussen

*Co-founder of ReD Associates and director of ReD Associates Europe,
Denmark*

A decorative background at the top of the slide featuring a network diagram with red and black nodes connected by thin lines, set against a light red gradient.

Impact of Social Sciences & Humanities

4-5 October 2018, Copenhagen

Plenary opening

Thomas Alslev Christensen

Head of Operations, Novo Nordisk Fonden, Denmark

novo
nordisk
fonden

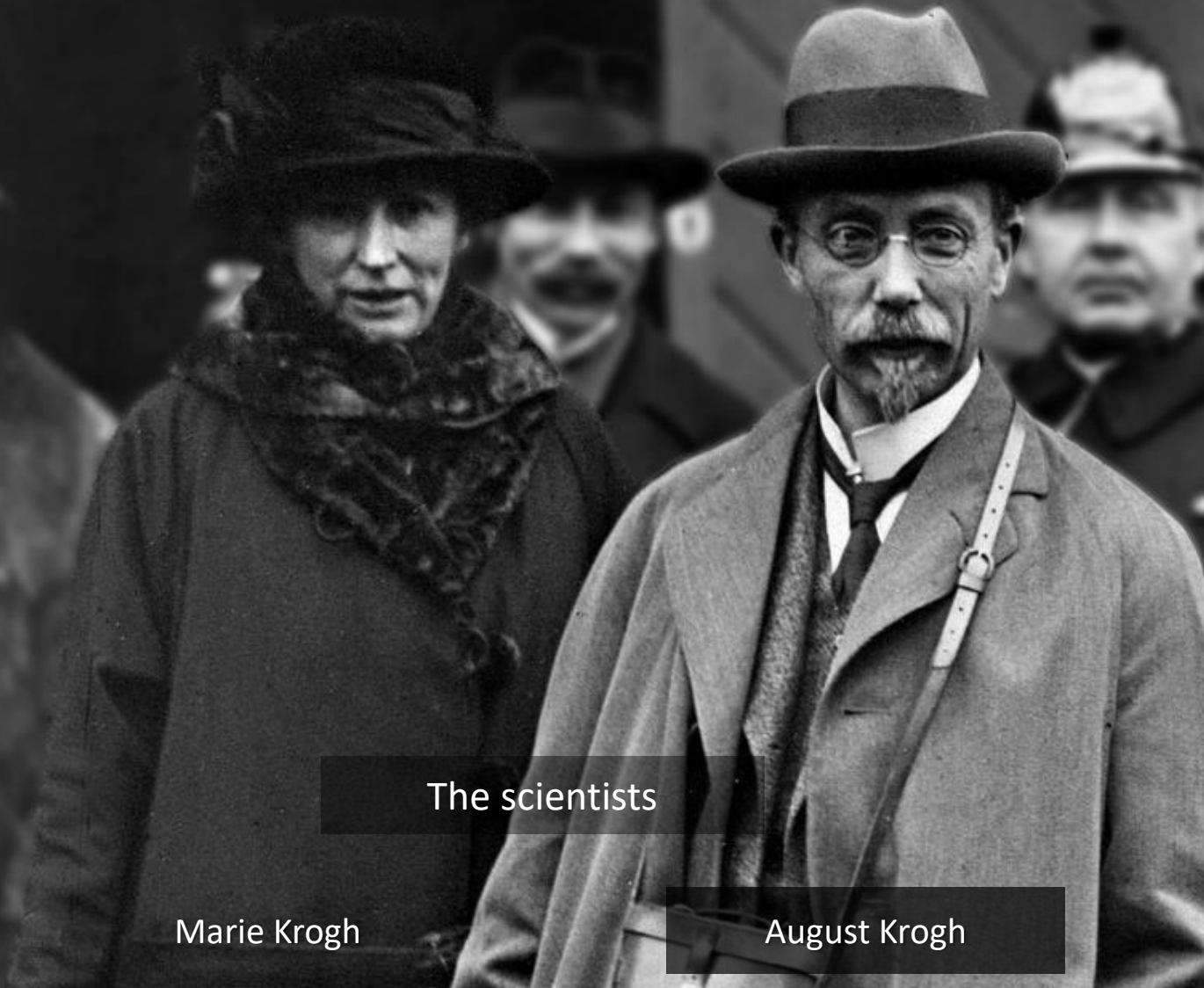


Science and business interactions for optimal impact

By Head of Operations, Thomas Alslev Christensen
Novo Nordisk Fonden

2019-2023

ORIGINS OF THE NOVO NORDISK FOUNDATION



The scientists

Marie Krogh

August Krogh

The clinician:



H.C. Hagedorn

The investor:



August Kongsted

The entrepreneurs:



Thorvald Pedersen



Harald Pedersen

Grant-awarding focus areas and long-term objectives

Biomedical and health science research and applications



Patient-centred and research based care



Life science research and industrial applications promoting sustainability



Natural and technical science research and interdisciplinarity



Education, outreach and innovation



Social, humanitarian and development aid



Enable people to live healthier and better lives by facilitating research that advances knowledge of human health and disease, solves health challenges and develops the health care system.

Make Denmark a global leader in delivering patient-centred and research based care for people with diabetes and facilitate the development of patient-centred and research based care within diabetes comorbidities and other endocrine disorders.

Act for and inspire development of a more sustainable world by supporting research that translates to life science solutions to benefit people and the environment.

Catalyze natural and technical science research, particularly in fields with potential interdisciplinary application to the life and health sciences and industrial biotechnology.

Support general science education and cultivate scientific and technical competencies and engagement. To benefit people, promote life science ecosystems that translate scientific discoveries into products and solutions and drive growth.

Improve the lives and prospects of vulnerable children and young people through education, developing competencies and other interventions.

Grant-awarding focus areas and long-term objectives

Biomedical and health science research and applications



Patient-centred and research based care



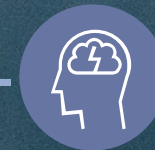
Life science research and industrial applications promoting sustainability



Natural and technical science research and interdisciplinarity



Education, outreach and innovation



Social, humanitarian and development aid



Enable people to live healthier and better lives by facilitating research that advances knowledge of human health and disease, solves health challenges and develops the health care system.

Make Denmark a global leader in delivering patient-centred and research based care for people with diabetes and facilitate the development of patient-centred and research based care within diabetes co-morbidities and other endocrine disorders.

Act for and inspire development of a more sustainable world by supporting research that translates to life science solutions to benefit people and the environment.

Catalyze natural and technical science research, particularly in fields with potential interdisciplinary application to the life and health sciences and industrial biotechnology.

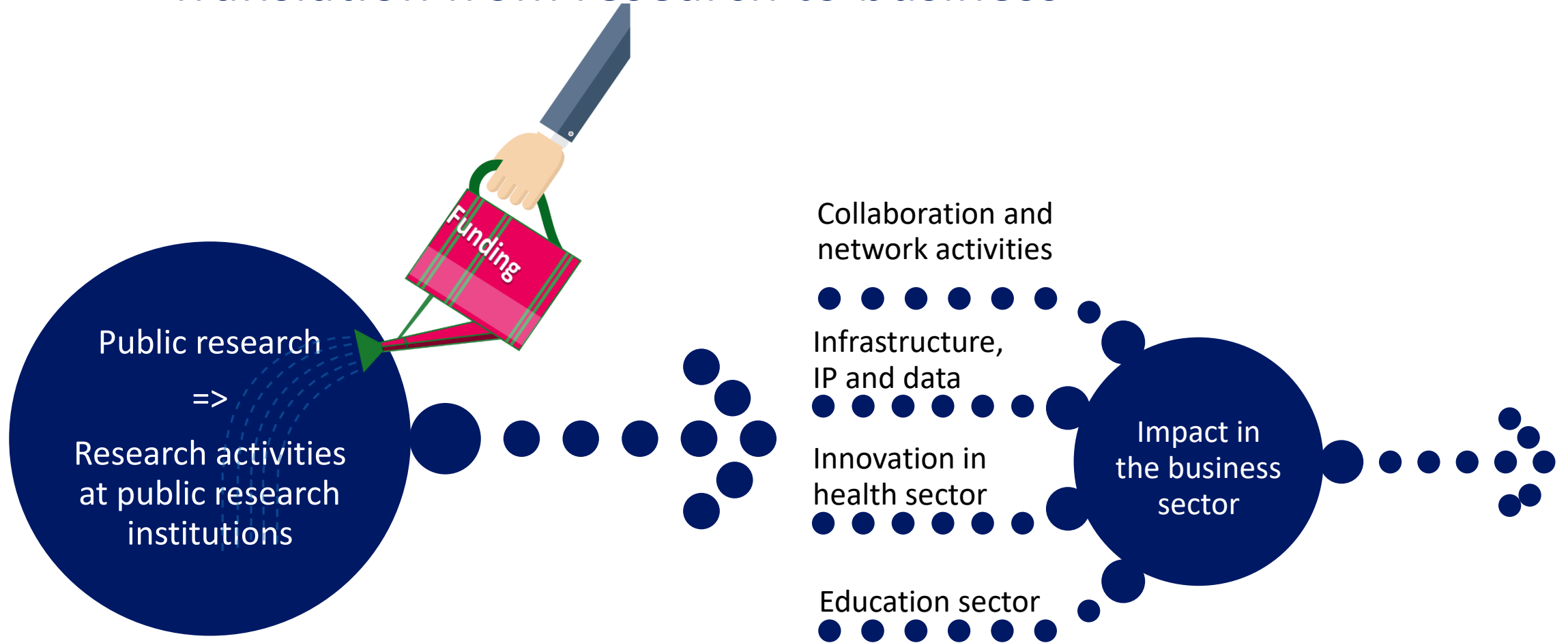
Support general science education and cultivate scientific and technical competencies and engagement. To benefit people, promote life science ecosystems that translate scientific discoveries into products and solutions and drive growth.

Improve the lives and prospects of vulnerable children and young people through education, developing competencies and other interventions.

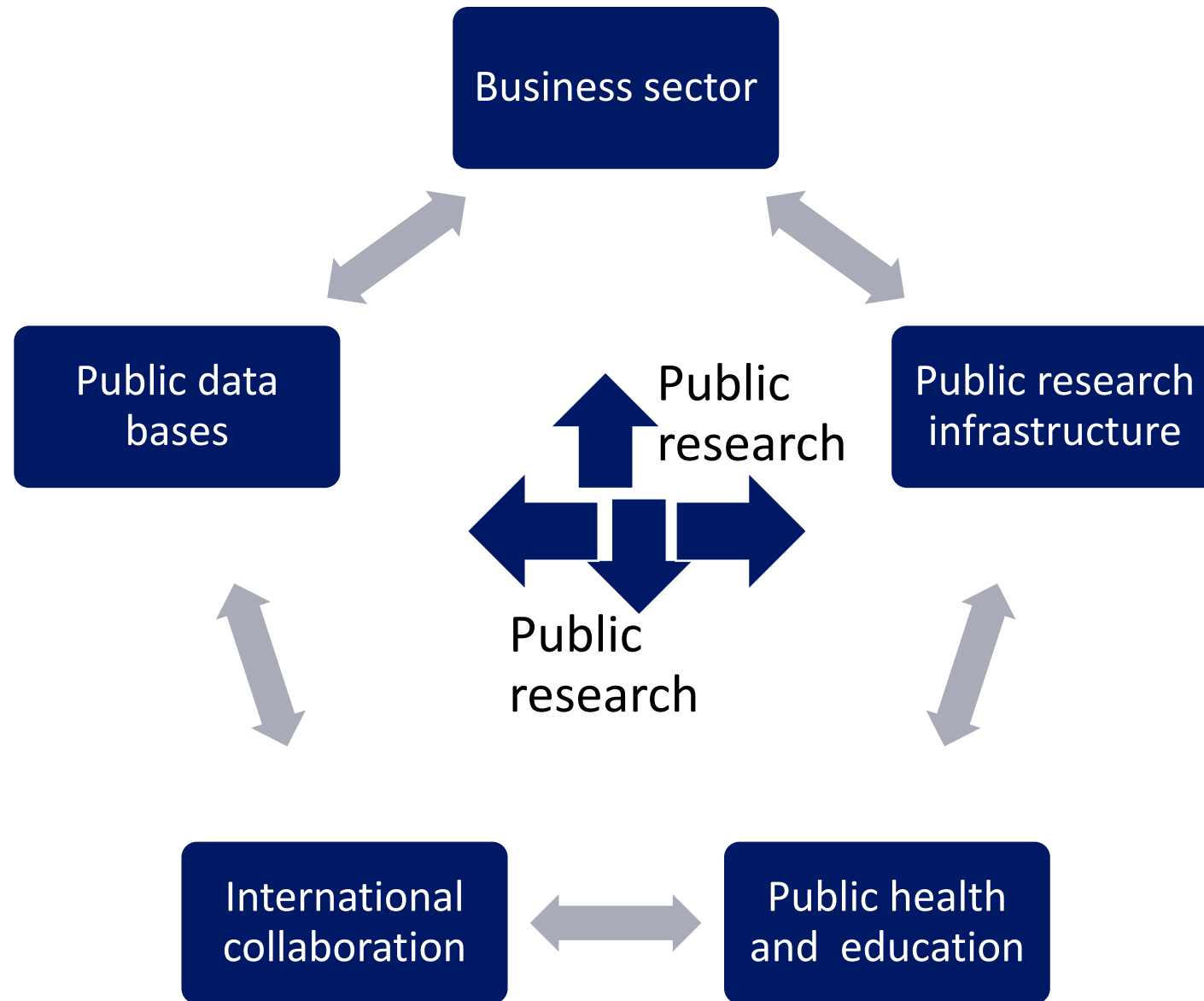
Roles of private foundations



Translation from research to business



Impact is created in non-linear multi-interactions using many different channels and instruments



Strong motivations on both sides (research & business) indicate positive impact

Optimal impact can be promoted in several ways



Type and purpose of collaboration

Type and purpose of translational chains

Type and purpose knowledge dissemination channels

Social science documents positive impact on:

- patent activity, innovations, new services and products
- Citation impact and scientific discoveries
- productivity, income, job creation and solutions
- concrete solutions to societal challenges
- Improved health and life perspectives

From public research to patient health

Public research activity



Research activity conducted by the recipients of Foundation grants and published in journals. Grant recipients have published 14,429 journal articles since 2000.

Clinical guidelines



53% of the diabetes guidelines and 18% of the cardiovascular disease guidelines in Denmark and elsewhere reference journal articles by recipients of Foundation grants.

General practitioners



General practitioners continuously update their knowledge from multiple sources.

79% of general practitioners acquire knowledge about the treatment of diabetes and cardiovascular diseases from clinical guidelines; 65% acquire knowledge from journals, and 28% from journal articles.

Patients



74% of the general practitioners say that clinical guidelines have resulted in more uniform treatment of their patients.

23% of the general practitioners say that using clinical guidelines has improved the health of their patients, and 33% say that using guidelines has made treatment more effective.

From public research to innovation activity in firms

Public research activity



Public research funded by the Foundation.

Collaboration



In 2017, recipients of Foundation grants collaborated with 266 companies in 351 collaborations; 26% of the companies were Danish.

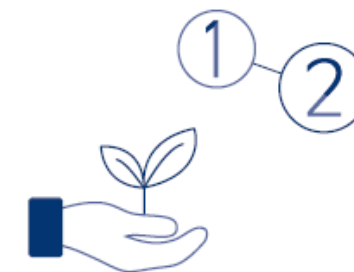
Journal articles



Grant recipients publish their research in scientific journals.

Industrial researchers co-authored 11% of Foundation-funded journal articles.

Patent activities and citings



1 of 16 funded journal articles cited in patent applications and patents.

2600 citings of funded journal articles in more than 2100 patent applications and patents.

Recipients of Foundation grants reported 115 patent applications and 13 patents between 2013 and 2017.

A decorative background at the top of the slide featuring a network diagram with red and black nodes connected by lines, set against a light red gradient.

Impact of Social Sciences & Humanities

4-5 October 2018, Copenhagen

Plenary opening

Jane Bjørn Vedel

*Assistant Professor Research and Innovation, University-industry relations at
Copenhagen Business School*

Friday 5 October, 2018

The impact debate and approaches to science-business interaction in SSH

Jane Bjørn Vedel, Copenhagen Business School

Background

Conducted research on science-business relationships since 2009
(+ I'm a social scientist with an industrial PhD)

Advisor roles since 2014: collaboration with senior economists in
leading consultancy firms and OECD on impact issues

Current research project = "The socioeconomic impact of
research-based education", funded by NNF 2017-2020

Outline

General observations on the impact debate

Current research project – approaches and findings

What are the implications for the field of SSH?

Initial observations

'Impact' often understood based on a linear model of innovation

Strong focus on outcomes

Problem: It generates too simple ideas of science-business interaction and societal impact

Alternative approaches

Impact based on a co-productionist model of innovation

Impact understood as change

For better or worse – not merely for optimal impact

Current research

“The socioeconomic importance of research-based education”

“The role of the private sector in public research institutions”

How does the private sector shape research and education practices in public research institutions?

Example: private funding

Methods: Qualitative research; pilot 2017, full study on now.

Preliminary finding

Respondents characterized the private grants as long-term, large scale and flexible.

They reported that the grants had changed:

- the dimensions of their research
- their career trajectory
- the conditions for educating next generation

But also challenges related to receiving large grants

Implications for SSH?

Expand the notion of 'science-business' (rethink the model)

Broaden the notion of impact – outcomes? Changes?

Ensure 'optimal reflexivity' in the impact debate

A network diagram with red and black nodes and lines, overlaid on a light red background.

Impact of Social Sciences & Humanities

4-5 October 2018, Copenhagen

Plenary opening

Q&A

David Budtz Pedersen (chair)

Mikkel B. Rasmussen

Thomas Alslev Christensen

Jane Bjørn Vedel



Impact of Social Sciences & Humanities

4-5 October 2018, Copenhagen

Up next

10.15-11.00 Roundtables

White: Strategic role of research foundations *HC Andersen Castle*

Red: Training & skills for impact *HC Andersen Castle*

Blue: Evidence-informed policy *Gemyse 1*

Yellow: Creative entrepreneurship *Gemyse 2*

Green: Institutions and leadership *Lumbay Hall*

Brown: Regional Collaboration *Lumbay Hall*